

ENGLISH: We will re-cap on work covered in Y1 e.g. capital letters, full stops etc. and begin to learn new types of punctuation and how to use it. We will continue to use nouns and adjectives in our writing and begin to learn about different spelling patterns. We will write about real events, poetry and edit our work.

READING— We will continue to read for pleasure and discuss why we like/dislike certain books. We will become familiar with a wider range of stories through our daily guided reading sessions.

Texts: Some of the texts we will be using are :

- Stone Age Boy
- George and the Dragon
- The Day The Crayons Quit



HISTORY: We will look at Kings and Queens and why the UK had castles. We will look at a timeline of the monarchy and castles and everything has changed over time. We will explore the features of castles & how they have been adapted for modern day times.

GEOGRAPHY: In our first term, we are going to be looking at settlements and local areas. This will be after October half term.

SCIENCE: Our main focus is the Use of Everyday materials—we recap the different materials and how they are used in everyday life. We will be identifying and comparing the suitability of a variety of everyday materials.

We will look at how the shapes of some objects can be changed.



YEAR 2
Autumn 1 2024
BRILLIANT BUILDINGS
Colossal Castles

EXIT POINT

Class castles-
We will be building our own castles.

PE: During this half term we will be working with on multi-skills which will include:

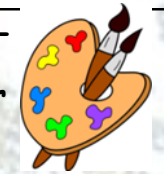
- Ball skills
- Movement
- Travelling
- Team work



ART: This half term we will be using castle illustrations as a stimulus for mark-marking using a wider range of tools. We will be experimenting with texture and add detail to drawings.

D&T: Later in the term, we will be doing food hygiene and making wraps whilst looking at healthy eating and nutrition.

MUSIC: In music, we will continue to follow Charanga, looking pulse, rhythm and pitch.



RE: What do Christians believe God is like?
We will look at where Christians find out about God.
We will look at parables and their meanings.

VISITS/EVENTS

Stafford Castle

MATHS: During this half term we will be focusing on the children's ability to understand the numbers to 100. They will use their growing understanding of place value to help them sort, compare and order numbers.

They will begin to develop their ability to count forwards and backwards efficiently in steps of 2,3,5, and 10.

PSHE
Family and relationships

Using our new Kapow scheme, this half term we are looking at our families and relationships and how these are all different. We will be considering others' feelings and what



CHALLENGE

Visit a castle and create a report about it. Could you include photographs and a description. If you can't get to a castle you could research one online

COMPUTING: We will continue to follow the Purple Mash Scheme. We will look at Online Safety & the importance of staying safe online. Moving onto Coding.

